



## EVOLUTION CONNECTION

### Endosymbiosis

We have mentioned that both mitochondria and chloroplasts contain DNA and ribosomes. Have you wondered why? Strong evidence points to endosymbiosis as the explanation.

Symbiosis is a relationship in which organisms from two separate species depend on each other for their survival.

Endosymbiosis (endo- = “within”) is a mutually beneficial relationship in which one organism lives inside the other.

Endosymbiotic relationships abound in nature. We have already mentioned that microbes that produce vitamin K live inside the human gut. This relationship is beneficial for us because we are unable to synthesize vitamin K. It is also beneficial for the microbes because they are protected from other organisms and from drying out, and they receive abundant food from the environment of the large intestine.

Scientists have long noticed that bacteria, mitochondria, and chloroplasts are similar in size. We also know that bacteria have DNA and ribosomes, just like mitochondria and chloroplasts. Scientists believe that host cells and bacteria formed an endosymbiotic relationship when the host cells ingested both aerobic and autotrophic bacteria (cyanobacteria) but did not destroy them. Through many millions of years of evolution, these ingested bacteria became more specialized in their functions, with the aerobic bacteria becoming mitochondria and the autotrophic bacteria becoming chloroplasts.

### The Central Vacuole

Previously, we mentioned vacuoles as essential components of plant cells. If you look at [Figure 4.8b](#), you will see that plant cells each have a large central vacuole that occupies most of the cell's area. The **central vacuole** plays a key role in regulating the cell's concentration of water in changing environmental conditions. Have you ever noticed that if you forget to water a plant for a few days, it wilts? That's because as the water concentration in the soil becomes lower than the water concentration in the plant, water moves out of the central vacuoles and cytoplasm. As the central vacuole shrinks, it leaves the cell wall unsupported. This loss of support to the plant's cell walls results in the wilted appearance.

The central vacuole also supports the cell's expansion. When the central vacuole holds more water, the cell becomes larger without having to invest considerable energy in synthesizing new cytoplasm.

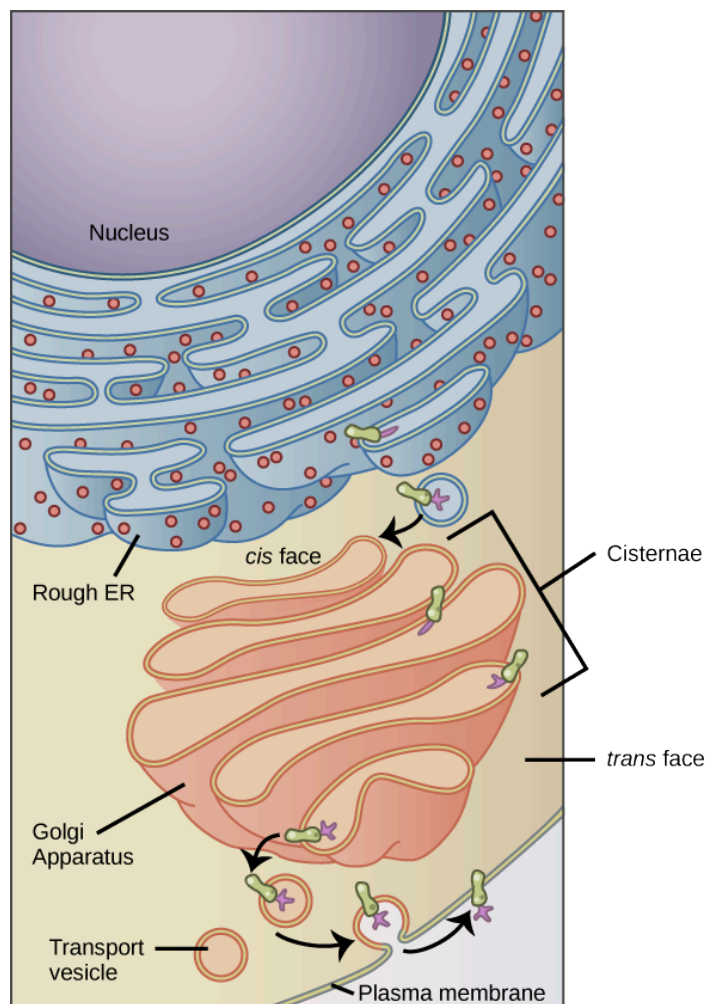
## 4.4 The Endomembrane System and Proteins

*By the end of this section, you will be able to do the following:*

- List the components of the endomembrane system
- Recognize the relationship between the endomembrane system and its functions

The endomembrane system (endo = “within”) is a group of membranes and organelles ([Figure 4.18](#)) in eukaryotic cells that works together to modify, package, and transport lipids and proteins. It includes the nuclear envelope, lysosomes, and vesicles, which we have already mentioned, and the endoplasmic reticulum and Golgi apparatus, which we will cover shortly. Although not technically *within* the cell, the plasma membrane is included in the endomembrane system because, as you will see, it interacts with the other endomembranous organelles. The endomembrane system does not include either mitochondria or chloroplast membranes.

## VISUAL CONNECTION



**Figure 4.18** Membrane and secretory proteins are synthesized in the rough endoplasmic reticulum (RER). The RER also sometimes modifies proteins. In this illustration, an attachment of a (purple) carbohydrate modifies a (green) integral membrane protein in the ER. Vesicles with the integral protein bud from the ER and fuse with the Golgi's *cis* face. As the protein passes along the Golgi's cisternae, the addition of more carbohydrates further modifies it. After its synthesis is complete, it exits as an integral membrane protein of the vesicle that buds from the Golgi's *trans* face. When the vesicle fuses with the cell membrane, the protein becomes an integral portion of that cell membrane. (credit: modification of work by Magnus Manske)

If a peripheral membrane protein were synthesized in the lumen (inside) of the ER, would it end up on the inside or outside of the plasma membrane?

## The Endoplasmic Reticulum

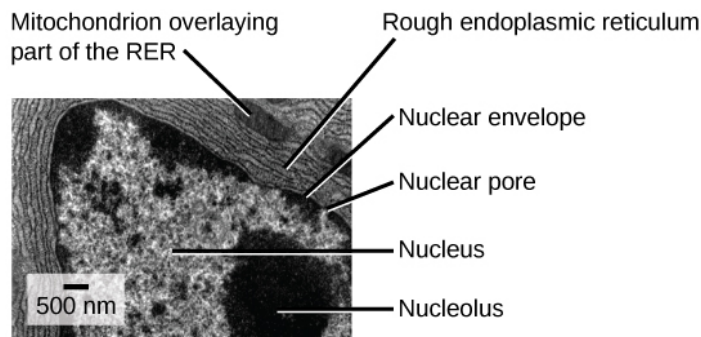
The **endoplasmic reticulum (ER)** (Figure 4.18) is a series of interconnected membranous sacs and tubules that collectively modifies proteins and synthesizes lipids. However, these two functions take place in separate areas of the ER: the rough ER and the smooth ER, respectively.

We call the ER tubules' hollow portion the lumen or cisternal space. The ER's membrane, which is a phospholipid bilayer embedded with proteins, is continuous with the nuclear envelope.

### Rough ER

Scientists have named the **rough endoplasmic reticulum (RER)** as such because the ribosomes attached to its cytoplasmic

surface give it a studded appearance when viewing it through an electron microscope (Figure 4.19).



**Figure 4.19** This transmission electron micrograph shows the rough endoplasmic reticulum and other organelles in a pancreatic cell.

(credit: modification of work by Louisa Howard)

Ribosomes transfer their newly synthesized proteins into the RER's lumen where they undergo structural modifications, such as folding or acquiring side chains. These modified proteins incorporate into cellular membranes—the ER or the ER's or other organelles' membranes. The proteins can also secrete from the cell (such as protein hormones, enzymes). The RER also makes phospholipids for cellular membranes.

If the phospholipids or modified proteins are not destined to stay in the RER, they will reach their destinations via transport vesicles that bud from the RER's membrane (Figure 4.18).

Since the RER is engaged in modifying proteins (such as enzymes, for example) that secrete from the cell, you would be correct in assuming that the RER is abundant in cells that secrete proteins. This is the case with liver cells, for example.

### Smooth ER

The **smooth endoplasmic reticulum (SER)** is continuous with the RER but has few or no ribosomes on its cytoplasmic surface (Figure 4.18). SER functions include synthesis of carbohydrates, lipids, and steroid hormones; detoxification of medications and poisons; and storing calcium ions.

In muscle cells, a specialized SER, the sarcoplasmic reticulum, is responsible for storing calcium ions that are needed to trigger the muscle cells' coordinated contractions.

### LINK TO LEARNING

You can watch an excellent animation of the endomembrane system [here \(http://openstax.org/l/insane\\_in\\_the\\_endomembrane\)](http://openstax.org/l/insane_in_the_endomembrane). At the end of the animation, there is a short self-assessment.



### CAREER CONNECTION

#### Cardiologist

Heart disease is the leading cause of death in the United States. This is primarily due to our sedentary lifestyle and our high trans-fat diets.

Heart failure is just one of many disabling heart conditions. Heart failure does not mean that the heart has stopped working. Rather, it means that the heart can't pump with sufficient force to transport oxygenated blood to all the vital organs. Left untreated, heart failure can lead to kidney failure and other organ failure.

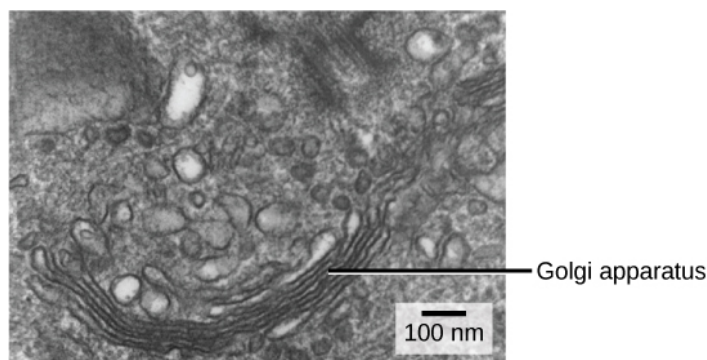
Cardiac muscle tissue comprises the heart's wall. Heart failure occurs when cardiac muscle cells' endoplasmic reticula do not function properly. As a result, an insufficient number of calcium ions are available to trigger a sufficient contractile force.

Cardiologists (cardi- = "heart"; -ologist = "one who studies") are doctors who specialize in treating heart diseases, including heart failure. Cardiologists can diagnose heart failure via a physical examination, results from an electrocardiogram (ECG, a test that measures the heart's electrical activity), a chest X-ray to see whether the heart is enlarged, and other tests. If the cardiologist diagnoses heart failure, he or she will typically prescribe appropriate medications and recommend a reduced table

salt intake and a supervised exercise program.

## The Golgi Apparatus

We have already mentioned that vesicles can bud from the ER and transport their contents elsewhere, but where do the vesicles go? Before reaching their final destination, the lipids or proteins within the transport vesicles still need sorting, packaging, and tagging so that they end up in the right place. Sorting, tagging, packaging, and distributing lipids and proteins takes place in the **Golgi apparatus** (also called the Golgi body), a series of flattened membranes ([Figure 4.20](#)).



**Figure 4.20** The Golgi apparatus in this white blood cell is visible as a stack of semicircular, flattened rings in the lower portion of the image. You can see several vesicles near the Golgi apparatus. (credit: modification of work by Louisa Howard)

We call the Golgi apparatus' the *cis* face. The opposite side is the *trans* face. The transport vesicles that formed from the ER travel to the *cis* face, fuse with it, and empty their contents into the Golgi apparatus' lumen. As the proteins and lipids travel through the Golgi, they undergo further modifications that allow them to be sorted. The most frequent modification is adding short sugar molecule chains. These newly modified proteins and lipids then tag with phosphate groups or other small molecules in order to travel to their proper destinations.

Finally, the modified and tagged proteins are packaged into secretory vesicles that bud from the Golgi's *trans* face. While some of these vesicles deposit their contents into other cell parts where they will be used, other secretory vesicles fuse with the plasma membrane and release their contents outside the cell.

In another example of form following function, cells that engage in a great deal of secretory activity (such as salivary gland cells that secrete digestive enzymes or immune system cells that secrete antibodies) have an abundance of Golgi.

In plant cells, the Golgi apparatus has the additional role of synthesizing polysaccharides, some of which are incorporated into the cell wall and some of which other cell parts use.



## CAREER CONNECTION

### Geneticist

Many diseases arise from genetic mutations that prevent synthesizing critical proteins. One such disease is Lowe disease (or oculocerebrorenal syndrome, because it affects the eyes, brain, and kidneys). In Lowe disease, there is a deficiency in an enzyme localized to the Golgi apparatus. Children with Lowe disease are born with cataracts, typically develop kidney disease after the first year of life, and may have impaired mental abilities.

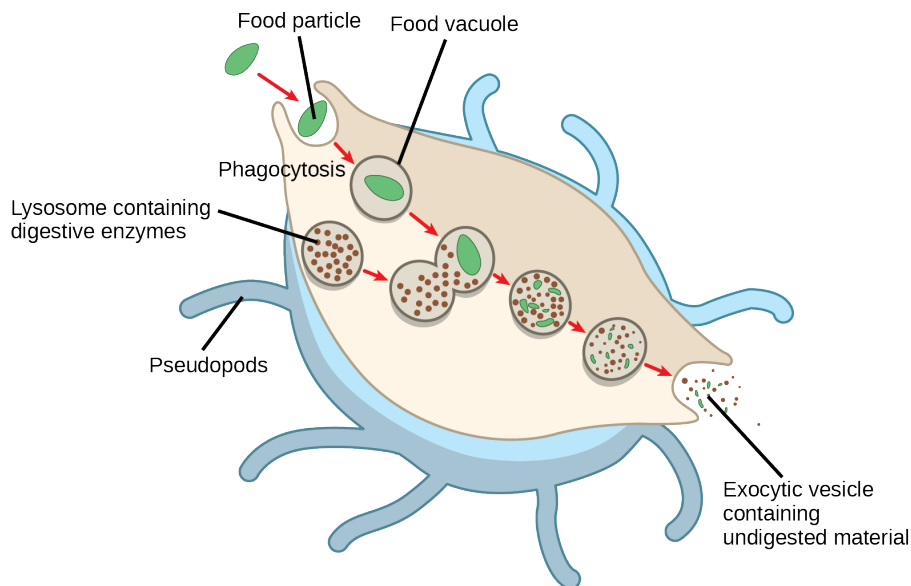
A mutation on the X chromosome causes Lowe disease. The X chromosome is one of the two human sex chromosomes, as these chromosomes determine a person's sex. Females possess two X chromosomes while males possess one X and one Y chromosome. In females, the genes on only one of the two X chromosomes are expressed. Females who carry the Lowe disease gene on one of their X chromosomes are carriers and do not show symptoms of the disease. However, males only have one X chromosome and the genes on this chromosome are always expressed. Therefore, males will always have Lowe disease if their X chromosome carries the Lowe disease gene. Geneticists have identified the mutated gene's location, as well as many other mutation locations that cause genetic diseases. Through prenatal testing, a woman can find out if the fetus she is carrying may be afflicted with one of several genetic diseases.

Geneticists analyze prenatal genetic test results and may counsel pregnant women on available options. They may also conduct genetic research that leads to new drugs or foods, or perform DNA analyses for forensic investigations.

## Lysosomes

In addition to their role as the digestive component and organelle-recycling facility of animal cells, lysosomes are part of the endomembrane system. Lysosomes also use their hydrolytic enzymes to destroy pathogens (disease-causing organisms) that might enter the cell. A good example of this occurs in macrophages, a group of white blood cells which are part of your body's immune system. In a process that scientists call phagocytosis or endocytosis, a section of the macrophage's plasma membrane invaginates (folds in) and engulfs a pathogen. The invaginated section, with the pathogen inside, then pinches itself off from the plasma membrane and becomes a vesicle. The vesicle fuses with a lysosome. The lysosome's hydrolytic enzymes then destroy the pathogen ([Figure 4.21](#)).

### Phagocytosis



**Figure 4.21** A macrophage has engulfed (phagocytized) a potentially pathogenic bacterium and then fuses with lysosomes within the cell to destroy the pathogen. Other organelles are present in the cell but for simplicity we do not show them.

## 4.5 The Cytoskeleton

*By the end of this section, you will be able to do the following:*

- Describe the cytoskeleton
- Compare the roles of microfilaments, intermediate filaments, and microtubules
- Compare and contrast cilia and flagella
- Summarize the differences among the components of prokaryotic cells, animal cells, and plant cells

If you were to remove all the organelles from a cell, would the plasma membrane and the cytoplasm be the only components left? No. Within the cytoplasm, there would still be ions and organic molecules, plus a network of protein fibers that help maintain the cell's shape, secure some organelles in specific positions, allow cytoplasm and vesicles to move within the cell, and enable cells within multicellular organisms to move. Collectively, scientists call this network of protein fibers the **cytoskeleton**. There are three types of fibers within the cytoskeleton: microfilaments, intermediate filaments, and microtubules ([Figure 4.22](#)). Here, we will examine each.